

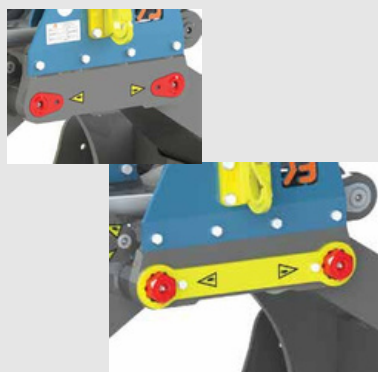
The hoods with weld-on hooks

The hoods are screwed to the frame with bolts. A bolted weld on hook is mounted as standard on each hood. Because the hooks are bolted, they are easy to replace if necessary.



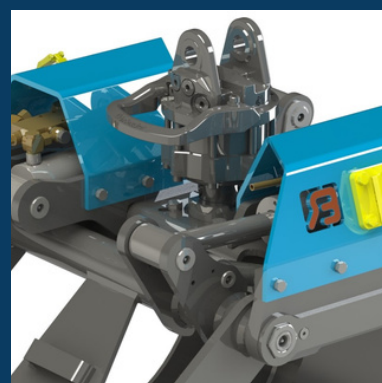
Locking devices

The main pins are secured by the locking devices on one side being sunk into the bridge piece plate and the nuts on the other side being secured with a locking plate.



Placement of rotator

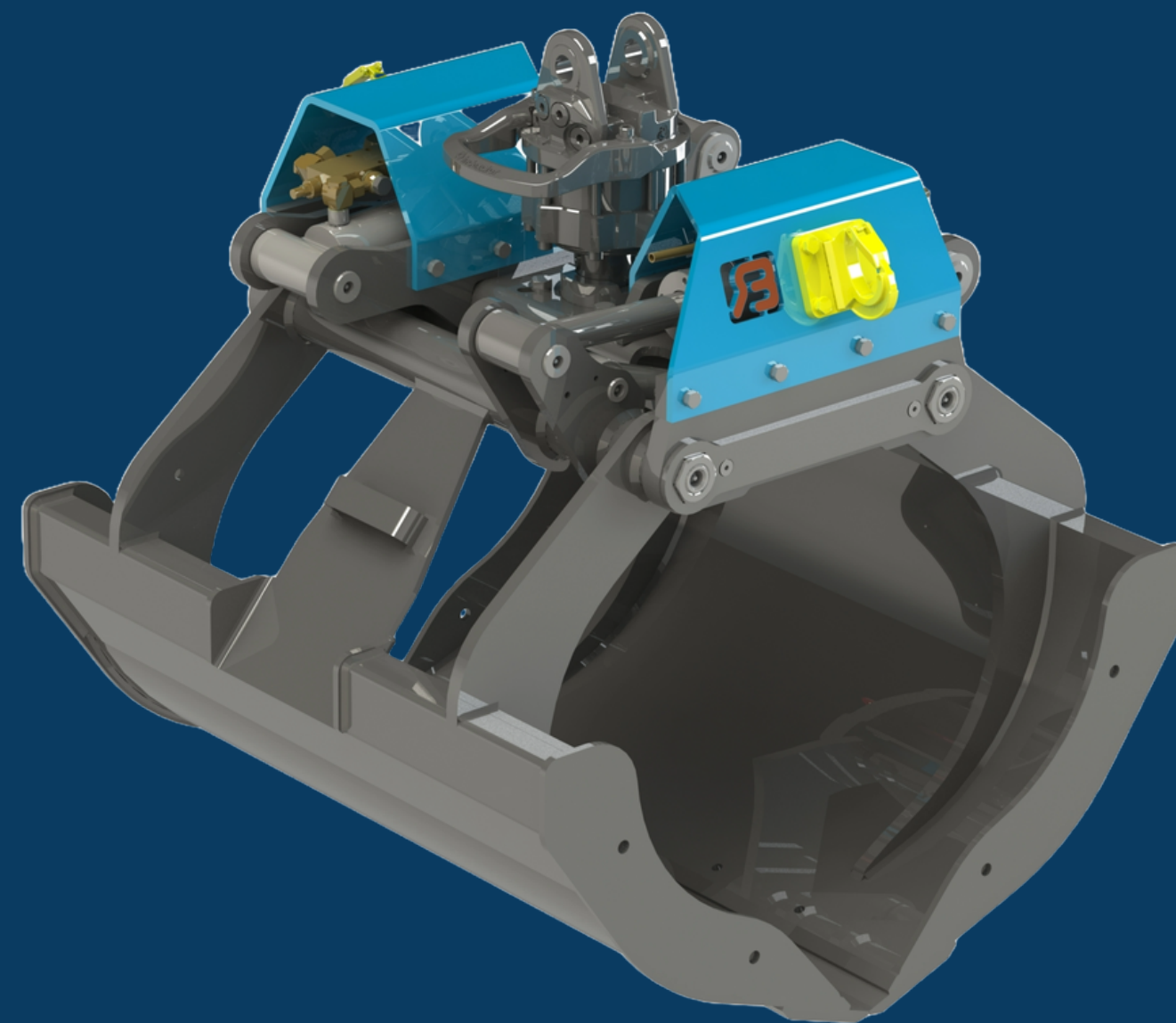
The BDVEZ is equipped with 2 hoods. This provides space to mount the rotator directly on the bridge piece. This results in a height saving of 210 mm



Type	Width	Capacity	Weight
BDVEZ 080	82 cm	315 L	415 kg
BDVEZ 090	92 cm	355 L	430 kg
BDVEZ 100	102 cm	395 L	445 kg

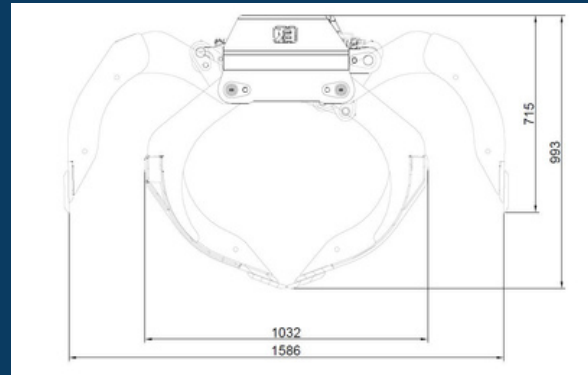
BDVEZ

Multi-purpose grab



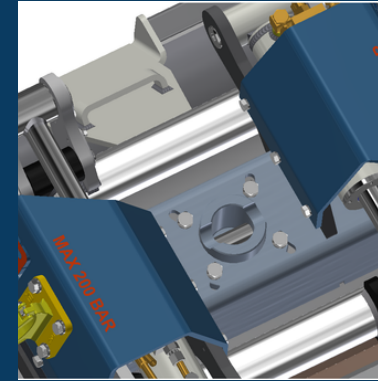
Grip opening

The BDVEZ has a large grip opening that can also be used to pick up road plates up to a width of 1500 mm.



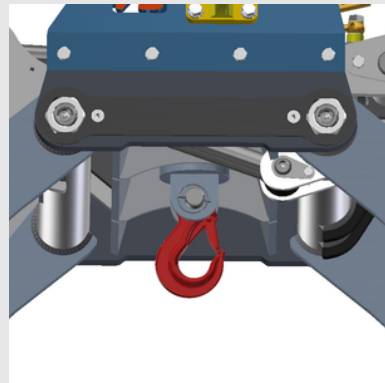
The hole pattern

The frame is equipped with the hole pattern for a flange rotator with 4 holes.



The extra lifting hook

An extra lifting hook is available as an option, which can be mounted in the middle under the bridge piece. The BDVEZ therefore offers a lot of versatility.



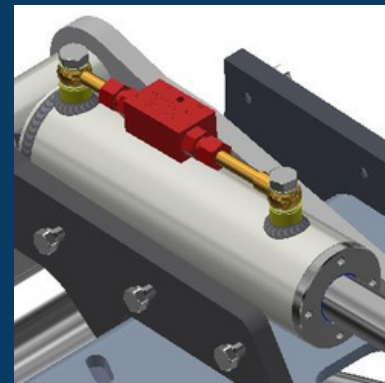
The interchangeable blades

The BDVEZ is equipped as standard with wear-resistant interchangeable blades that are bolted to the shells. When the blades are worn, they can be unscrewed and turned over to use the other worn side.



Non-return valve

Due to a malfunction in the hydraulic system of the crane, the pressure in the cylinder can drop. To prevent the load from falling out of the grab in such situations, it is equipped with a non-return valve as standard.



Mounting plate

To allow the grab to be folded onto the crane, one shell has a recess into which a plate with bracket is welded. The grab can be secured to a Z-crane when folding.



Accessories

For loading and unloading gravel, grit, etc., separate side plates are available as an option, which turns the BDVEZ into a closed grab.

It is also possible to install a set of driving plate segments. This turns your BDVEZ into a driving plate clamp that can easily pick up road plates with a width of up to 2000 mm.

